



COMMUNITY WOODLAND ASSOCIATION CONFERENCE 2023

CASTLEMILK PARK JOURNEY OF NEW SIGNAGE FROM 2018

Stuart Whittaker
Community Woodland Officer
Castlemilk Park



Scottish
Forestry

Coilltearachd
na h-Alba

paths
for all

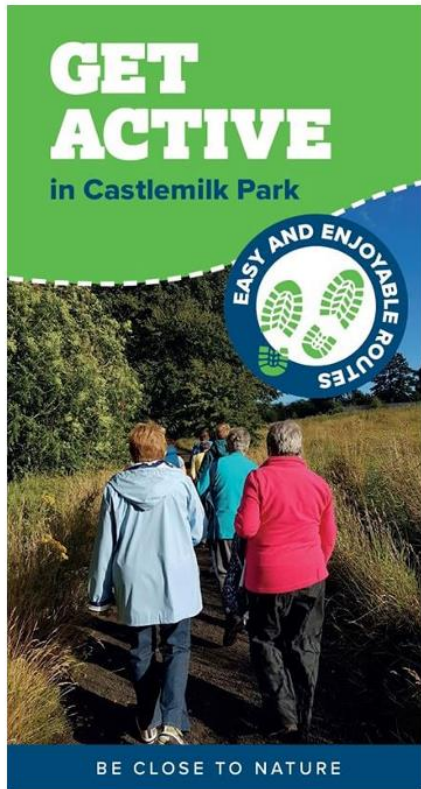




Some Context...

- Located in South East of Glasgow
- Woodland is in compartments - 11 overall & is 64.2ha
- Woodland is surrounded by Castlemilk estate
- Since 2011, there has been a Community Woodland Officer employed by Cassiltoun Housing Association & part funded by Scottish Forestry
- Cassiltoun Housing Association covers 32ha of management of the woodland

Get Active Leaflet - 2018



- Some funding from Paths for all
- Design compiled with a mix of community involvement and from Community Woodland Officer
- The intention was to get local people outside, encouraging them to be active in Castlemilk Park
- Very straight forward but didn't connect to any onsite information or interpretation

Youth Advisory Panel - 2018



- Youth Advisory group attended a workshop on improving green space in Stirling with Greenspace and Youth Scotland
- They choose to look at signage - the group wanted the old signage replaced as it was faded and vandalised
- Received £500 pounds to do further research
- Then came back to Castlemilk park to find out how they could improve signage



Scottish
Forestry
Coilltearachd
na h-Alba



Cassiltoun
Housing Association

Funding Secured – 2019

- Youth Advisory group panel had suggested connecting areas of importance, not just street names
- Received permission from Glasgow City Council to remove old signage
- 20 new signs installed - promoting access through the park, lots of support from Castlemilk Park Project volunteers in checking distance and also proofing signs





Next Round of Funding – late 2019

- Due to the success of the first funding from Paths for All, we were successful in a second round of funding for more signage
- Signs were increased from 20 to 60
- Lots of community feedback & Youth Advisory Panel involvement
- Lots of re-checks and measuring distances
- Signage was ready to go but then COVID-19 hit early 2020



Scottish
Forestry
Coilltearachd
na h-Alba



Next Round of Funding – late 2019



Castlemilk Park Signage: 650 x 225 (double-sided) – x37
3mm composite aluminium with
RA1 reflective print and traffic laminate.
Supplied with cantilever and tamtorque banding.





Mid to Late 2020



New Funding - 2021

Lockdown happened in early 2021 but with new funding from Paths for All, we looked to upgrade the following:

1. New trail markers for 3 paths: Daffodil, Ice House and Waterfall
2. The Get Active leaflet
3. New information and interpretation board
4. Glasgow City Council incorporating the new Magnificent 11 walk in any information
5. Engaging with schools & community members with the Art in the Park project
6. Training volunteers in path grading for putting in new information.



Getting things ready - 2021



Scottish
Forestry
Coilltearachd
na h-Alba



Cassiltoun
Housing Association

Getting things ready - 2021

"I like the path especially where the daffodils are in the Spring, never knew where that path was and also I like it as it's mainly flat."
 Cassiltoun Housing Association Youth Group Member

"Have a walk through Castlemilk Park and wander down to the pond... where you will see the beautiful waterfall cascading down... There is plenty of wildlife, and an amazing variety of flowers and many interesting trees."
 Castlemilk Health Worker

"I enjoy the historical areas such as the Ice House and learning what it was used for... There is always something that makes you stop and admire the beauty of nature."
 Castlemilk Resident

Key

- Daffodil Walk
- Waterfall Walk
- Ice House Walk
- Seats
- Bus Stop
- Train Station
- Roads
- Paths
- Stream
- Woodland

Enjoy Scotland's outdoors responsibly

- take responsibility for your own actions
- respect the interests of other people
- care for the environment.

KNOW THE CODE BEFORE YOU GO
 outdooraccesscode.scot

Take Care in the Park

Please be aware that following heavy rain, and during cold snaps, the paths can be slippery underfoot. Take care particularly on the bridges and the steep paths.

Getting things ready - 2021

Become a Castlemilk Park Volunteer

- To meet new people & take part in woodland activities.
- Help with conservation tasks, support the park's wildlife, help with setting up events and help keep the park looking beautiful.
- Training and development opportunities are available to support your volunteer role.

There are many different groups to get involved with – Wellbeing Group, Youth Advisory Group, Friends of Castlemilk Park, becoming a walk leader.

The Magnificent 11

The Magnificent 11 is a four-part circular walk linking Linn Park to King's Park and Castlemilk Park. Passing the Jenniburn Centre, it heads up via Fernbrae Meadows to Cathkin Braes and on to Windlaw Rd. Then close by Carmunnock, crosses into Carnbooth, to return through Netherton Braes to Linn Park. For full walk information, visit: www.glasgowramblers.org.uk/mag11

The Heart of Castlemilk Park

Welcome to Castlemilk Park, the woodland that runs through Castlemilk. The woodlands were originally part of the designed landscape of Castlemilk House, however now the woodland is very much the heart of the Castlemilk community.

Connect with Castlemilk Park

Be close to nature

Cassiltoun Housing Association

For more information about getting active in Castlemilk Park contact Cassiltoun Housing Association's Community Team.

Phone: 0141 634 2674
Email: community@cassiltoun.org.uk
Address: Cassiltoun Housing Association, Castlemilk Stables, 59 Machrie Road, Castlemilk, G45 0AZ

Castlemilk Park Project/
Cassiltoun Housing Association
@CassiltounHA and @Cassiltoun
www.cassiltoun.org.uk

Produced by Fitzpatrick Woodmire - 01604 711177

Cassiltoun Housing Association

paths for all

NatureScot
Scotland's Nature Agency
Inverness Road 16 5-16

Scottish Forestry
Coilltearachd na h-Alba

Cassiltoun Housing Association

New Updated Leaflet



Scottish Forestry

Coilltearachd na h-Alba



Cassiltoun Housing Association



●●● Daffodil Walk

The easiest waymarked route, through the woodland and passing the wildflower meadow, beside the football pitch. In spring, experience the daffodils in full bloom on the open grass along Barlia Drive.

Wide, smooth, tarmac path. Some short, steep sections. Some areas can be flooded following heavy rain & icy following cold spells. No gates or steps. Includes crossing small car park.



1 mile / 1.4km
Allow 40 mins
easy

Beginning at Castlemilk Stables, follow the pavement along Barlia Terrace to the woodland entrance.

In spring, the open space is full of bright, colourful daffodils.

The path continues along to Barlia football pitches, where you will see the wildflower meadow in full bloom in late Spring and Summer.

Crossing the car park, walk around the barrier and continue back along the path with magnificent trees along both sides, the former main driveway to Castlemilk House.

Dropping down a slight incline, follow the path through the pedestrian barrier until you arrive back at Castlemilk Stables.

Species to look out for: Daffodils, Common spotted orchids and Bullfinches.



●●● Waterfall Walk

A great low-level walk, following the stream past the old fishing pond. Path leads through woodland, briefly along a pedestrian path, and up to the waterfall.

Wide, smooth, tarmac path with 2 short, moderately steep sections. Path can be slippery following rain and cold conditions. Includes cobbles on bridge, wide kissing gate, short section along pavement.



1 mile / 1.8km
Allow 50 mins
easy



Starting at Castlemilk Stables, turn right, following the path across the bridge. Turn left at the end of the bridge, heading towards the former Castlemilk House fishpond. Look out for birds such as kingfishers perching on the trees on the island in the middle of the pond. As the path continues past the pond, look out for the sequoia (Giant Redwood) tree. Take the path on the left, continue along and take a further left, immediately before the exit to Tormusk Road.

Follow the path down the slope, passing trees such as oak, sycamore, hawthorn, and larch. The path will briefly exit the woodlands, along a pavement then back into the woods. Follow the path, keeping the stream on your left. The path climbs a steep gradient, at the top of which, you will have an amazing view of the waterfall. You will emerge back at the pond, turn left to cross the waterfall, and retrace your steps to the Stables.

Species to look out for: Giant sequoia (redwood) tree, Dipper & Mallard ducks.



●●● Ice House Walk

A picturesque walk, following the stream south through the woodland, past the remains of the historic ice house (green cage).

Wide, smooth tarmac path with a short, steep slope. Path can be flooded following rain, icy in winter. Includes cobbles, short flight of steps, brief section along a pavement.



1 mile / 1.5km
Allow 40 mins
moderate

From Castlemilk Stables, turn right, following the path across the bridge. Turn right and cross the stream over the footbridge.

Along the right-hand side of the path, you will pass a green cage, protecting the remnants of the historic icehouse. This was used by Castlemilk House to store food, for cooling drinks, and making cold desserts.

Continue along the path, up a small flight of steps and follow the path to the left, crossing the stream.

The path goes up an incline, leaving the woods onto Ardenraig Road.

Turn right, briefly walking along the pavement and re-enter the woods on your right. Continuing along this path, you will pass a small circular seat. Turn right, passing through the barrier and head back towards the Stables.

Species to look out for: Foxes, Trees such as Lime, Oak and Sycamore.



Late 2021

- Castlemilk Park volunteers installed:
 - New information and interpretation signage board at the Castlemilk stables
 - Art in the Park artwork roundels
 - Magnificent 11 signs going up with the Ramblers Scotland
- Volunteers put up all works on the new Ramblers Scotland path map
- Support from the Castlemilk park volunteers has been invaluable



Late 2021



Scottish Forestry
Coilltearachd na h-Alba



Connect with Castlemilk Park

Welcome to Castlemilk Park, the woodland that runs through Castlemilk.

The woodlands were originally part of the designed landscape of Castlemilk House and there are now three small walks through the park that you can follow today to experience this unique woodland landscape.

Check out the photos below for some of the amazing species and structures found in Castlemilk Park!

☀️ Daffodil Walk

The easiest walking route, through the woods and across the fields in tracks, make the Daffodil path. In spring, experience the colours in full bloom on the open grass along Burns Grove.

Woods, woods, it's a pair. Some short, steep slopes. Some areas can be slippery following rain and some are steep. No gates or steps. Increase walking pace on path.

1 mile / 1.6km
As easy as 1-2-3

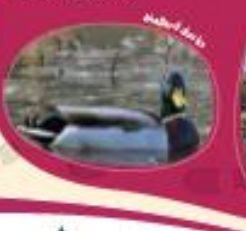


💧 Waterfall Walk

A great low-level walk, following the stream past the old fishing ponds. Path winds through woodlands, mainly using a narrow pavement, and up to the waterfall.

Woods, woods, it's a pair! In 2 short, moderate steep sections. Path can be slippery following rain and some are steep. No gates or steps. Increase walking pace on path.

1 mile / 1.6km
As easy as 1-2-3



🏠 Ice House Walk

A quiet walk following the stream south through the woodlands, past the remains of historic ice house grade cage.

Woods, woods, it's a pair with a short, steep slope. Path can be slippery following rain, icy in winter. Increase walking pace on path, or if steep, or if slippery.

1 mile / 1.6km
As easy as 1-2-3



For more information about getting involved in Castlemilk Park, contact the Cassiltoun Housing Association's Community Team.

Phone: 0141 624 2875
Email: community@cassiltoun.org.uk
Address: Cassiltoun Housing Association, Castlemilk Station, 30 Melville Road, Castlemilk, G11 6JL

Castlemilk Park Project
Cassiltoun Housing Association
@CassiltounUK and @Cassiltoun
www.cassiltoun.org.uk



Enjoy Scotland's outdoors responsibly

- Take responsibility for you
- Respect the interests of others
- Care for the environment



Take Care in the Woods

Please be aware that following heavy cold snaps, the paths can be slippery particularly on the bridges and the stiles.

The Magnificent 11

Castlemilk Park is part of the Magnificent 11 circular walk - for more details visit: www.gov.scot/info/public/06911.htm



Be close to



paths for all



Scottish Forestry
Coilltearachd na h-Alba



New Interpretation & Information Board



Late 2021



Scottish
Forestry
Coilltearachd
na h-Alba



Cassiltoun
Housing Association

2022

- Feedback received regarding area of Castlemilk Park with no signage. Again, we applied for funding through Paths for All
- We were successful for the final bit of signage in Miller woodland area of Castlemilk park.
- Creation of a leaflet to promote the woodland in the Miller Primary woodland with 2 information boards to promote at Miller Primary School and Castlemilk Family Centre Nursery



Scottish
Forestry
Coilltearachd
na h-Alba



Walk through your local woods



These paths link Ardencraig Road, Ardencraig Drive and Ardencraig Terrace. If you are walking to the school, the nursery or just want to know more about your woodland, this will guide you. This is a green space for everyone (Note: the path up to Ardencraig Terrace has steps and may not be accessible for all).

#LESSLITTER
LOVE
CASTLEMILK

This logo was designed by Cassiltoun Housing Association Youth Advisory Panel



2022



Scottish Forestry
Coilltearachd na h-Alba



Woodland Wander

What plants and leaves can you find throughout the year?

Take Care in the Park

Please be aware that following heavy rain and during cold snaps, the path can be slippery underfoot.

Enjoy Scotland's outdoors responsibly

- take responsibility for your own actions
- respect the interests of other people
- care for the environment.

SCOTTISH OUTDOOR ACCESS CODE
outdooraccess-scotland.scot

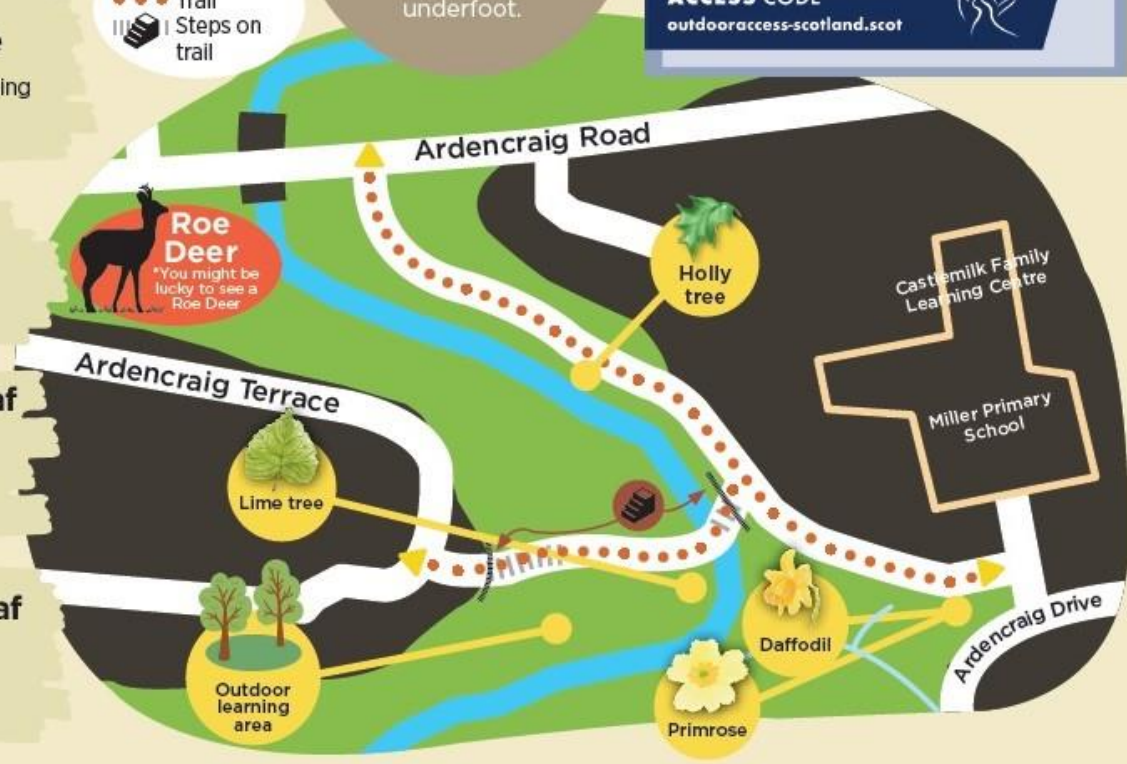
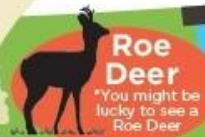


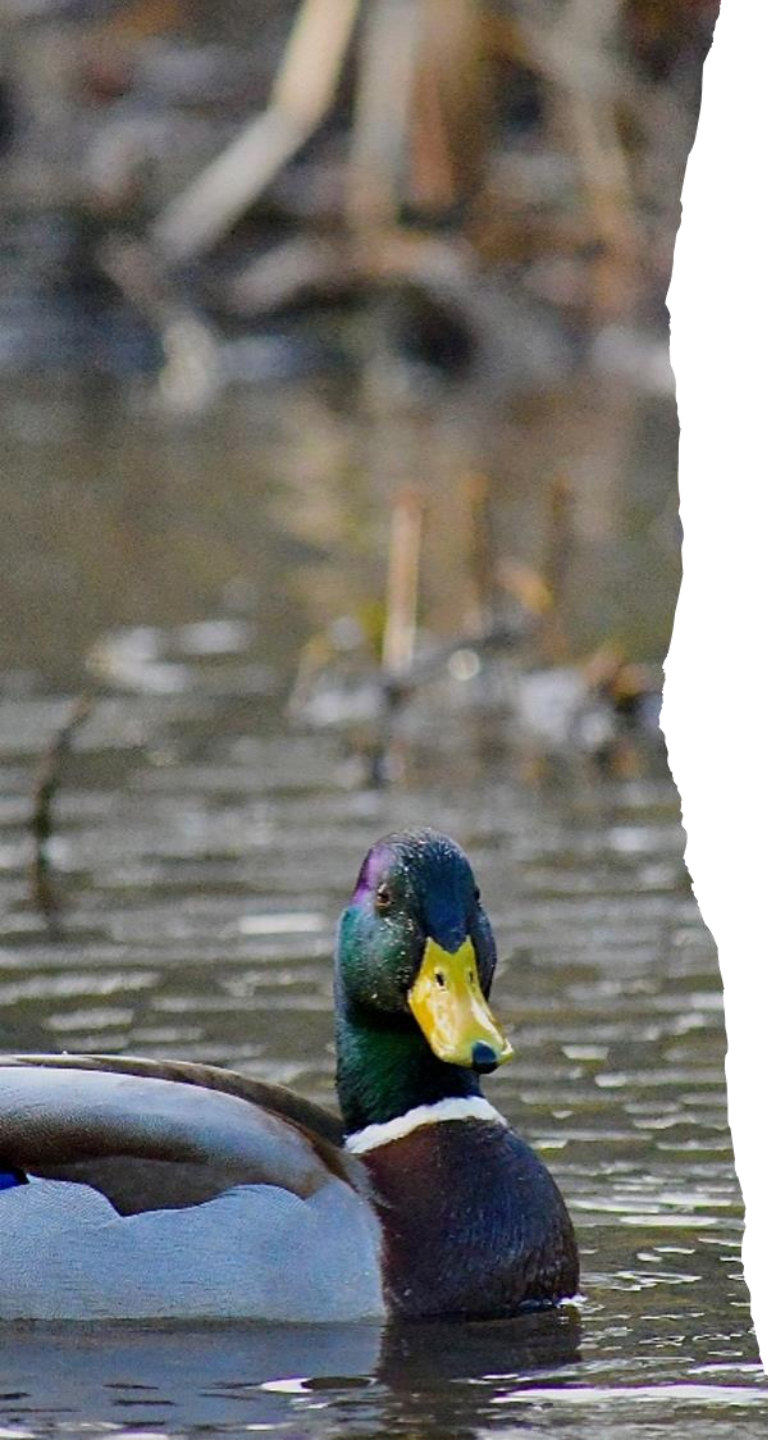
Primrose
You can see this during Winter to Spring months

Daffodil
You can see these during spring

Lime Leaf
You can see these during spring to autumn, both on trees and ground

Holly Leaf
You can see these all year round





Volunteer Support



Scottish
Forestry
Coilltearachd
na h-Alba



Cassiltoun
Housing Association

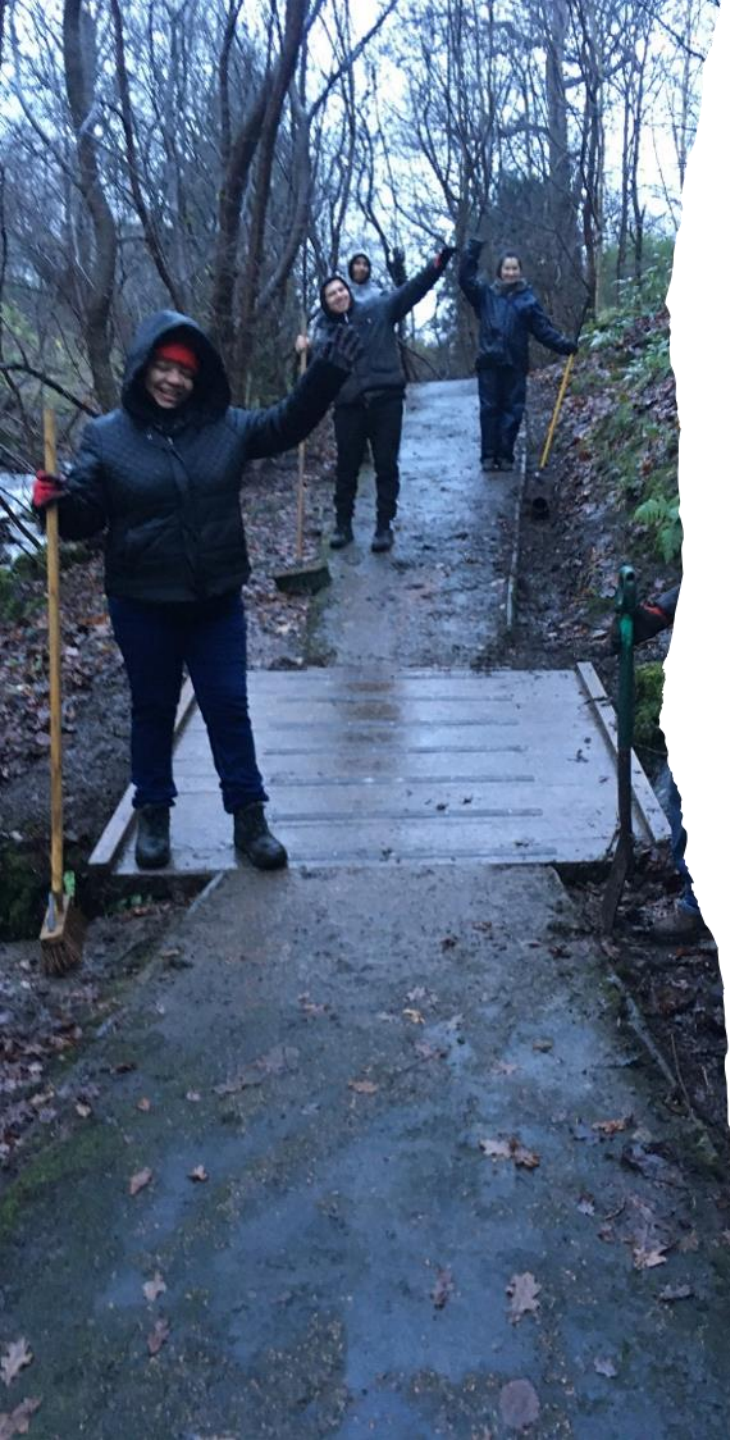
2023

- 75 signs now up in the woodland of Castlemilk park
- Two new leaflets promoting Castlemilk Park for health & wellbeing, and its biodiversity
- 2 signs have been destroyed
- New information board
- We do get them tagged but have worked with other organisations to try to limit also Castlemilk Park volunteers have taken ownership of the signage.



Scottish
Forestry
Coilltearachd
na h-Alba





New Signs & More Maintenance



Scottish
Forestry
Coilltearachd
na h-Alba



Cassiltoun
Housing Association

One idea has led to much, much more

- Cycling Scotland - funding of the path upgrading of path network
- New structures i.e., 3 new notice boards and new bench (funding from Friends of Castlemilk Park and Glasgow Community Fund).
- Started from the Youth Advisory panel and also involved community members, Castlemilk Park volunteers and many more.



Scottish
Forestry
Coilltearachd
na h-Alba



Cassiltoun
Housing Association

Thank you!

Questions?



Scottish
Forestry
Coilltearachd
na h-Alba



Cassiltoun
Housing Association