

Community Woodlands Association Annual Conference 2023



Connecting People and Places in
Urban Greenspaces and Woodlands

Mike Batley MCIEEM CEnv
Green Action Trust

Community Woodlands Association Annual Conference 2023



Connecting People and Places in Urban
Greenspaces and Woodlands

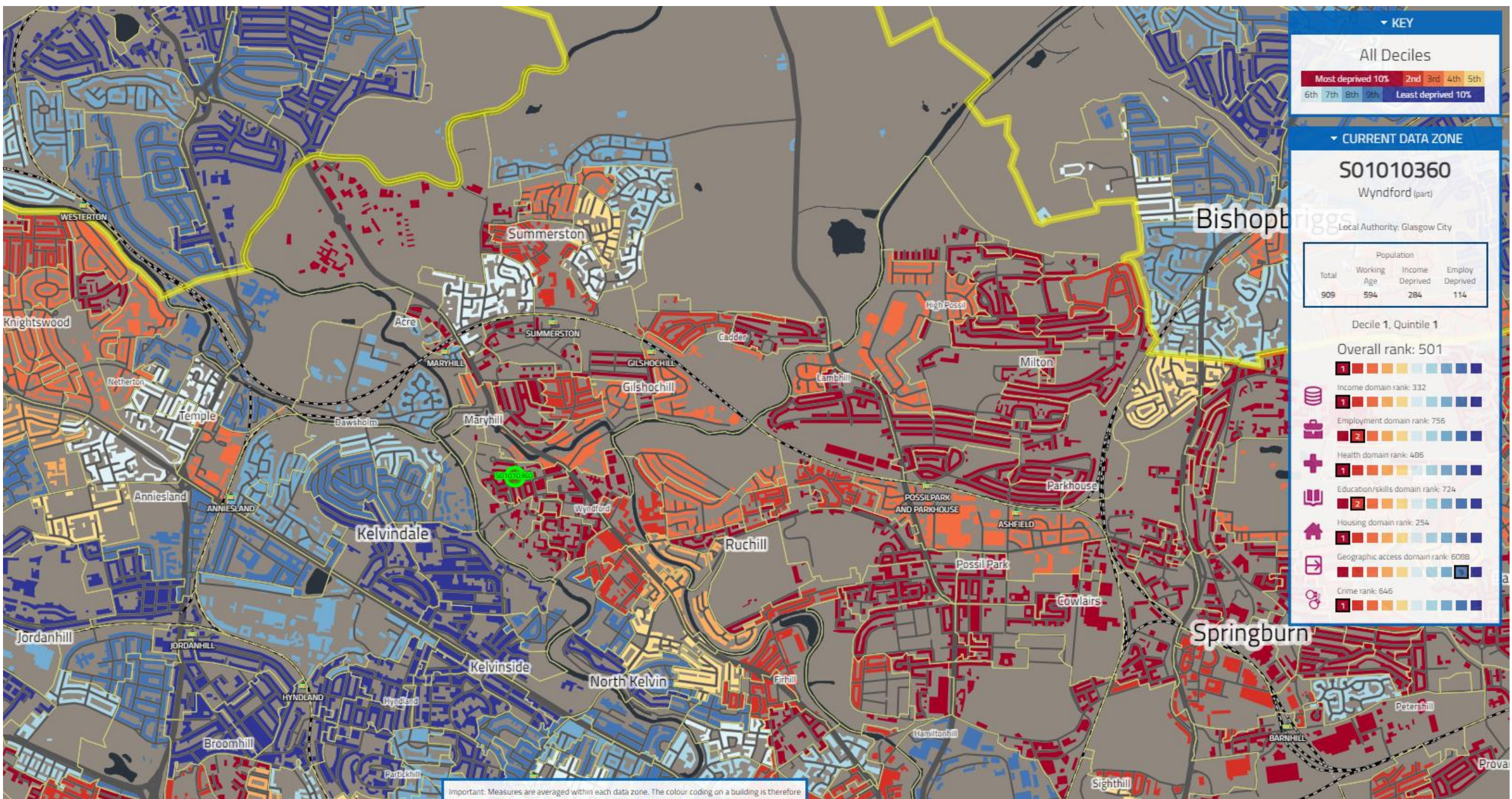
- Some Preliminary Remarks
- Green Action Trust – who we are and what we do
- Connections – Place
- Connections – People

Community Woodlands Association Annual Conference 2023



Connecting People and Places in Urban
Greenspaces and Woodlands

Welcome to Maryhill, North Glasgow – a land of contrasts



KEY

All Deciles

Most deprived 10% 2nd 3rd 4th 5th
6th 7th 8th 9th Least deprived 10%

CURRENT DATA ZONE

S01010360
Wyndford (part)
Local Authority: Glasgow City

Population				
Total	Working Age	Income Deprived	Employ Deprived	
909	594	284	114	

Decile 1, Quintile 1

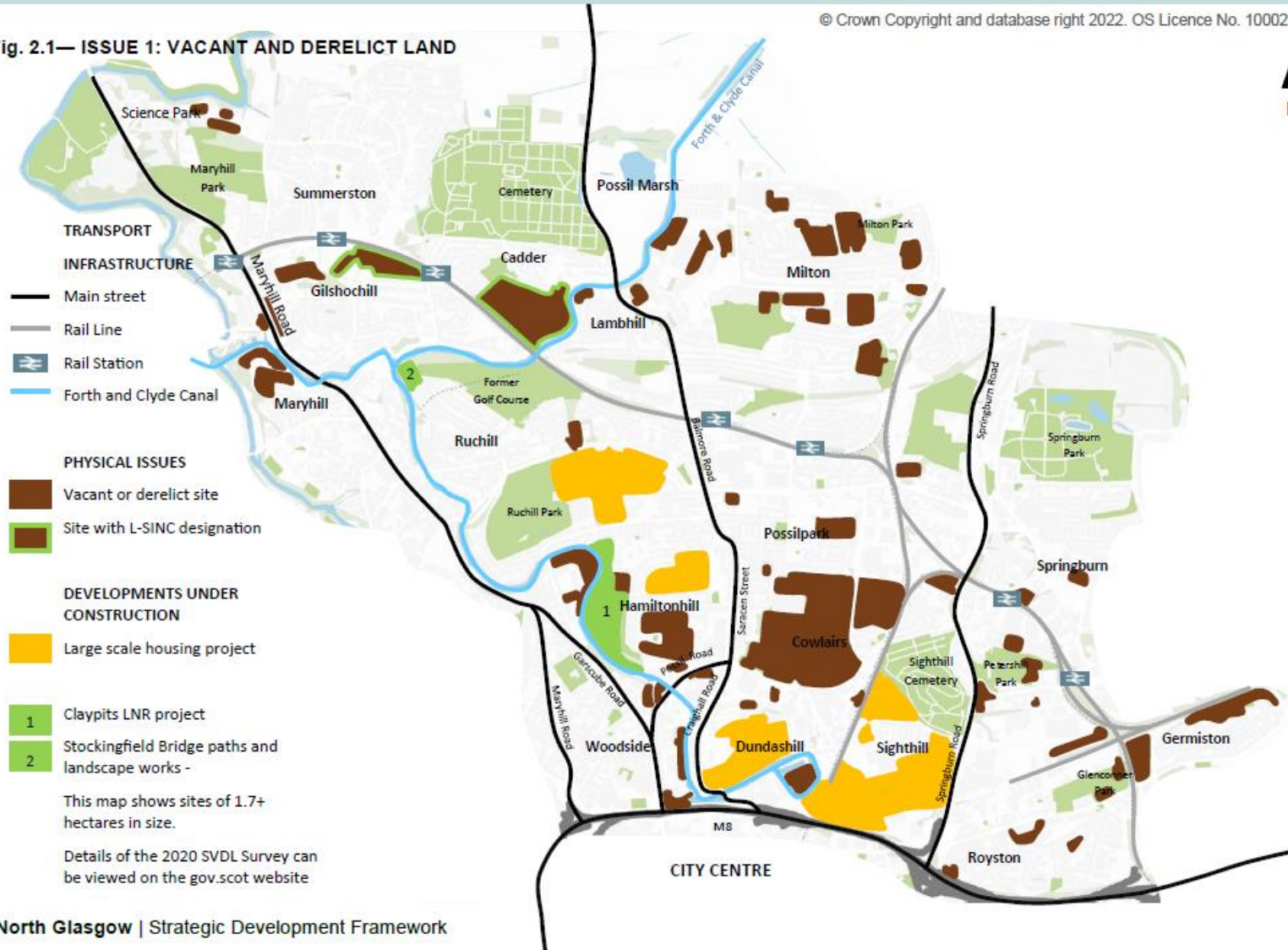
Overall rank: 501

- Income domain rank: 332
- Employment domain rank: 756
- Health domain rank: 486
- Education/skills domain rank: 724
- Housing domain rank: 254
- Geographic access domain rank: 6088
- Crime rank: 646

Important: Measures are averaged within each data zone. The colour coding on a building is therefore

Fig. 2.1— ISSUE 1: VACANT AND DERELICT LAND

© Crown Copyright and database right 2022. OS Licence No. 100023379





Cadder Woods





Hamiltonhill Clay Pits LNR

Stockingfield Junction



Spiers Wharf



Pinkston Watersports

PROJECT & PROGRAMME DELIVERY

We Provide a Full End-to-End Solution



Pre-Project Consultation

Looking at planning, policy & match funding; advice on portfolio & long-term strategy



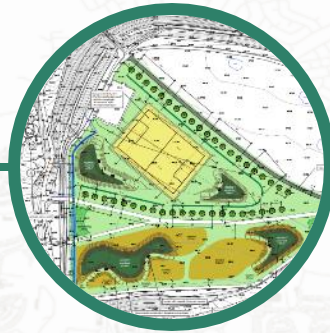
Site Survey & Feasibility

Including aerial and ecological surveying; GIS data and mapping; planning consents



Stakeholder Engagement

Managing community consultation and other stakeholders



Concept Design

Developing masterplans and landscape designs



Project & Contract Management

Handling procurement processes and managing full project delivery



Monitoring & Evaluation

Monitoring frameworks, logic models & long-term recommendations

OUR CLIENTS

We work with a broad range of landowners, land managers and stakeholders



Registered
Social Landlords



The Scottish
Government



Non-Departmental
Public Bodies



Local
Authorities



Housing
providers



Large scale programmes
& partnerships



Businesses &
private landowners



Not for profit &
communities

VDL: GREENSPACE ENHANCEMENT

Avenue End Road, Glasgow

- Client:** Glasgow City Council
- Value:** £535,000 (with funding from VDL Investment Programme)
- Delivered:** 4 ha of low amenity value space transformed into usable community greenspace
- Teaching circle
 - Mixed tree and shrub planting for increased biodiversity value & carbon capture
 - New formal paths and seating areas
 - Wetland habitat
 - Conservation of water vole habitat

Wider Context:

- We have converted over 30 ha of VDL into Greenspace since 1994
- We work with Scottish Land Commission on the Scottish VDL Survey identifying sites for greenspace reclassification
- Maximised project delivery by leveraging the previous Scottish VDL Fund and current Scottish VDL Investment Programme



NET ZERO: PLANTING AT SCALE

Former landfill site, Greenoakhill Forest, Glasgow

Client: Patersons Quarries Ltd through the Landfill Communities Fund

Value: £600,000

Delivered: Regeneration of a landfill and recycling site located in the East of Glasgow split by the M74

Creation of a new community woodland & teaching circle

Over 20,000 trees planted across 10 ha

Access improvements through creation of paths and improvement of the car park

Wider Context:

We have been a principal part of the reforestation of central Scotland helping to take total woodland cover from 11% in 1994 to over 20% today.

Over the last 20 years we have planted over 1,900 ha of new woodland across the central belt; an estimated 3 million trees or the equivalent of 79,000 tonnes of CO² stored.



LARGE SCALE PROGRAMMES

Co-ordinating the delivery of multi-partner national & regional initiatives

Central Scotland Green Network

National Planning Priority (NPF3 and NPF4)

40-year timeframe to 2050

Focused on addressing:

- Climate change
- Biodiversity loss
- Environmental inequality

Landscape-level CSGN sub-projects include:

- Leven Connectivity Programme
- Clyde Climate Forest
- Seven Lochs Wetland Park
- 10,000 Raingardens

Clyde Climate Forest

- Delivery Partner
- Themes: Canopy, Connectivity, Carbon
- Proposed tree warden scheme



Central Scotland Green Network



Community Woodlands Association Annual Conference 2023



Connecting People and Places in Urban Greenspaces and Woodlands

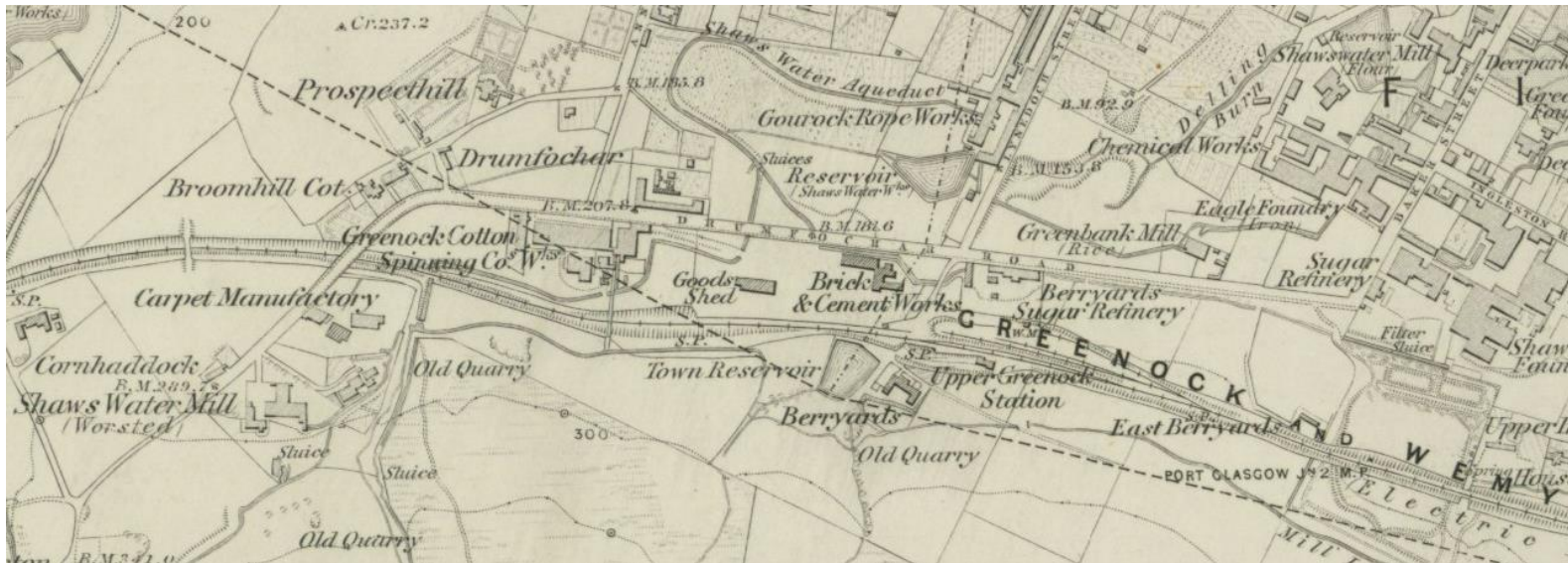
- Virtually every bit of underused urban and peri-urban land has a story to tell
- Understanding the past and present context can greatly inform what we subsequently do
- What looks like neglect is often a consequence of an inability of people to change things or other pressures on their lives
- Some places just need sorting out and it can be counter-productive to respond to complex social and cultural issues
- Physical challenges exist that can be major barriers to change

Community Woodlands Association Annual Conference 2023



Connecting People and Places in Urban
Greenspaces and Woodlands

Scott Street, Greenock and the Greenock Catman



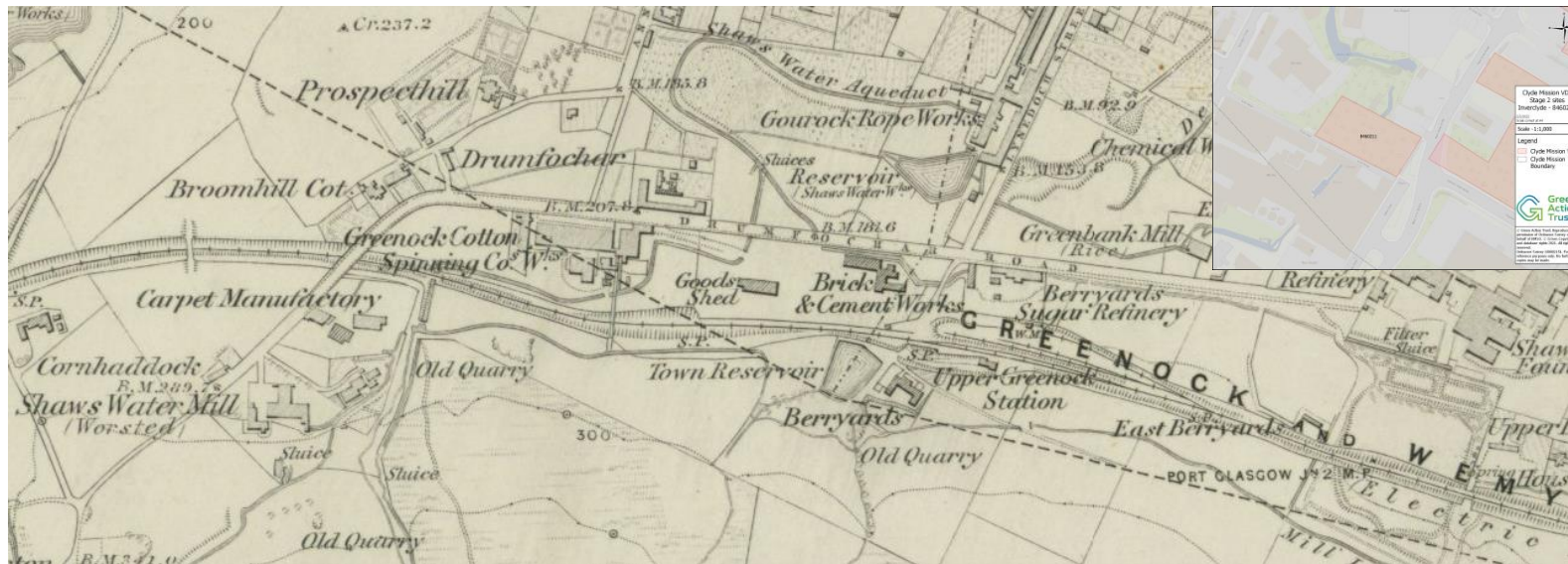
1864 Renfrewshire OS Six-inch

Community Woodlands Association Annual Conference 2023



Connecting People and Places in Urban
Greenspaces and Woodlands

Scott Street, Greenock and the Greenock Catman



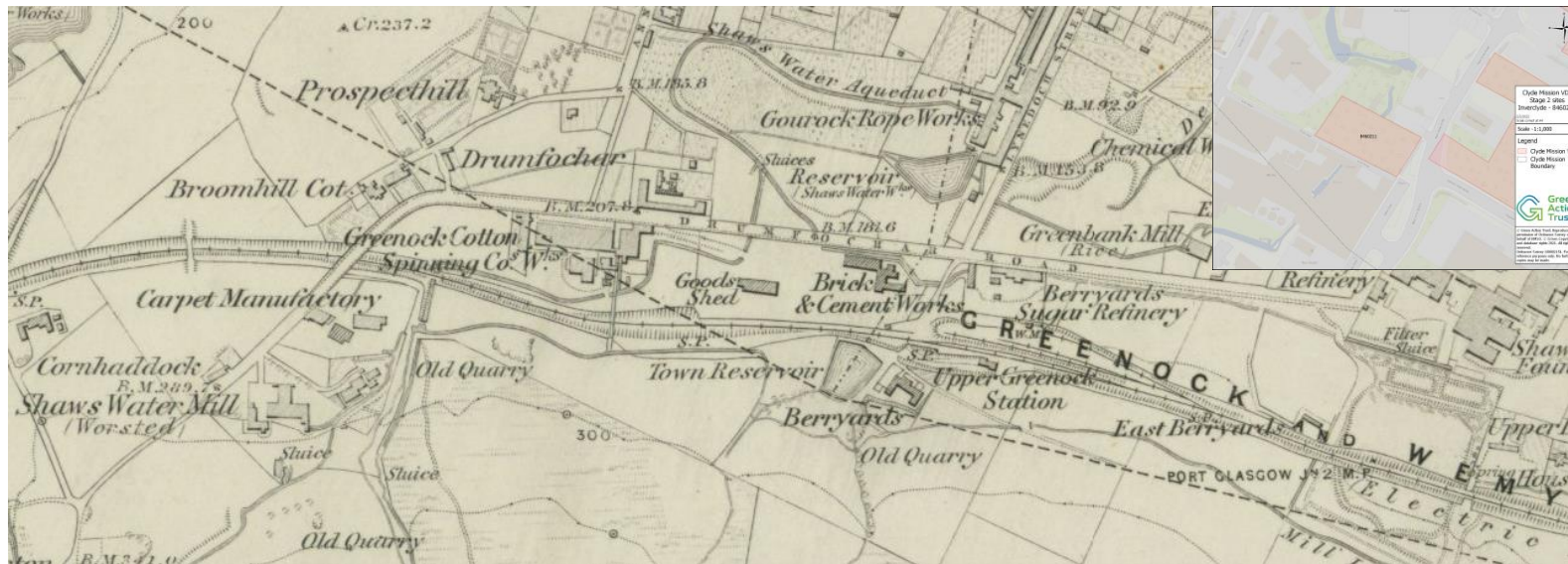
1864 Renfrewshire OS Six-inch

Community Woodlands Association Annual Conference 2023

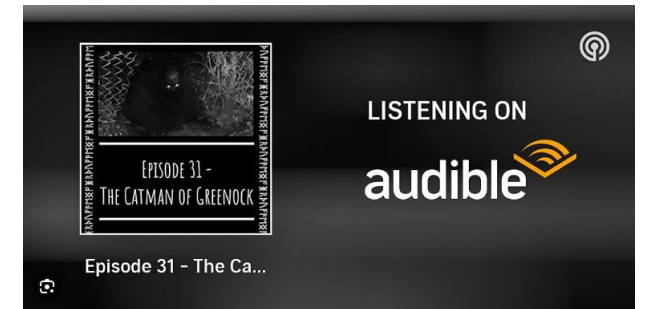


Connecting People and Places in Urban
Greenspaces and Woodlands

Scott Street, Greenock and the Greenock Catman

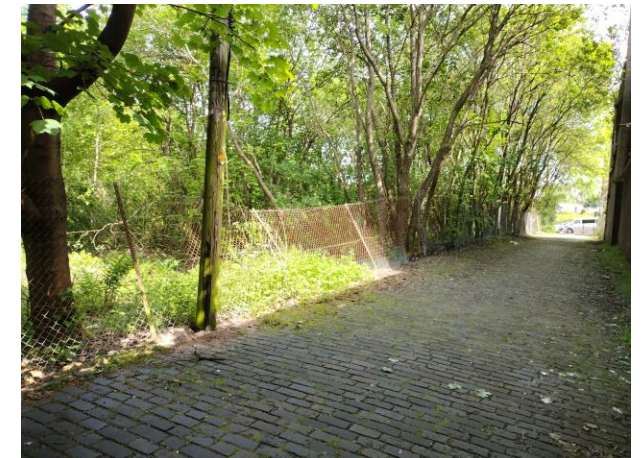


1864 Renfrewshire OS Six-inch



Episode 31 - The Catman of Greenock | Marvels, Mysteries and Midlanders | Podcasts on Audible | Audible.com

Visit

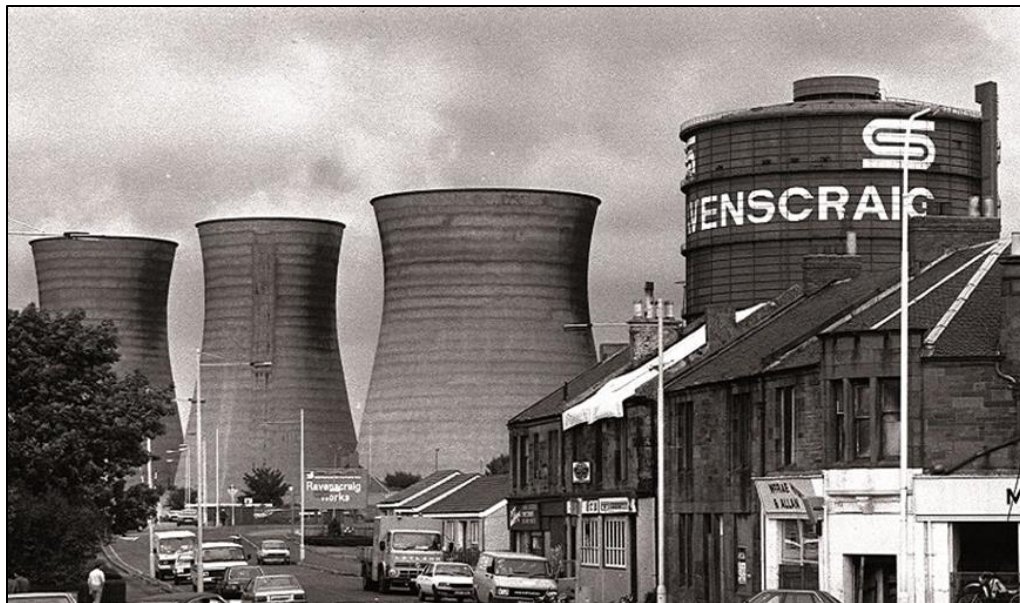


Community Woodlands Association Annual Conference 2023



Connecting People and Places in Urban
Greenspaces and Woodlands

Ravenscraig – Steelworks or Woodlands, Wishaw House and Chopin



Community Woodlands Association Annual Conference 2023



Connecting People and Places in Urban
Greenspaces and Woodlands

Ravenscraig – Steelworks or Woodlands, Wishaw House and Chopin



Community Woodlands Association Annual Conference 2023



Connecting People and Places in Urban
Greenspaces and Woodlands

Craigneuk – tapping into community resilience



Community Woodlands Association Annual Conference 2023



Connecting People and Places in Urban
Greenspaces and Woodlands

Wishawhill Wood – build it and they shall come...

<https://storymaps.arcgis.com/stories/b8a45f1b32154e61b5142a0d88335de5>

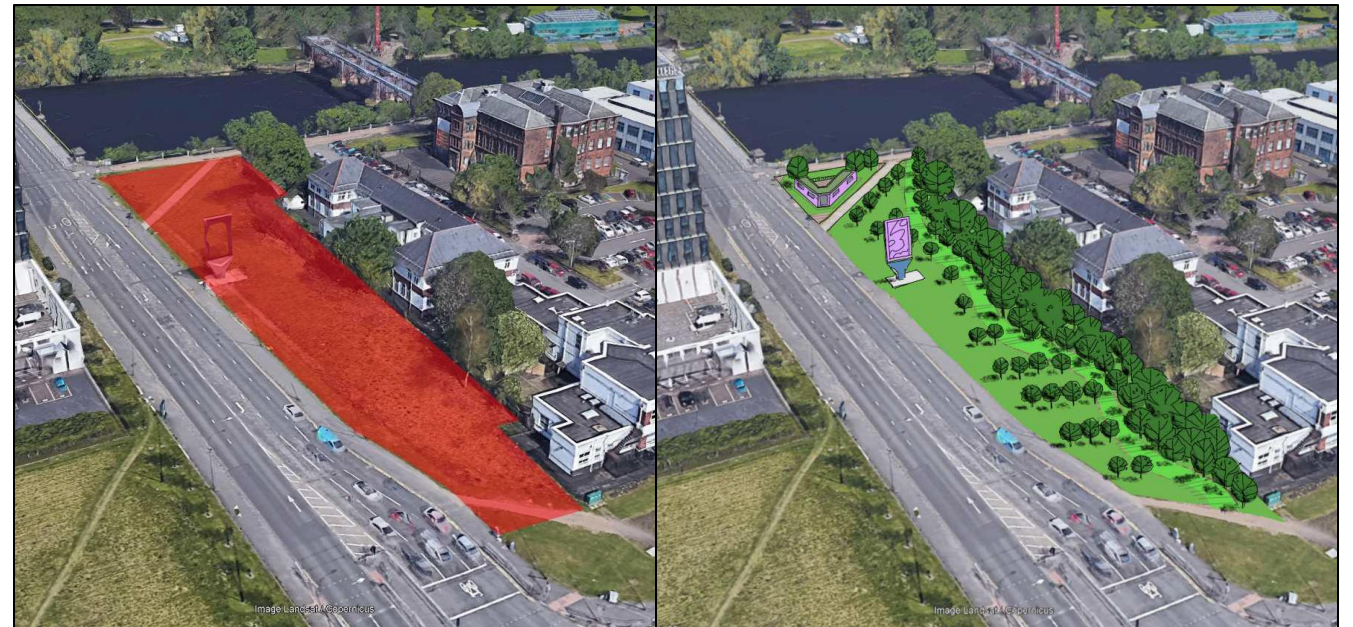


Community Woodlands Association Annual Conference 2023



Connecting People and Places in Urban
Greenspaces and Woodlands

Ravenscraig / Crown Street, Glasgow – how hard can it be?



Community Woodlands Association Annual Conference 2023



Connecting People and Places in Urban Greenspaces and Woodlands

- The book of consultation techniques has been written many times...
- “People make places”
- Community champions are the greatest resource we have
- Conversely, projects can burn people out and support services are increasingly scarce
- Listening can offer us new horizons but be prepared to stand your ground!

Community Woodlands Association Annual Conference 2023



Connecting People and Places in Urban Greenspaces and Woodlands

Be as thorough as you can...

...and keep the feedback coming

ML0730 STARRIGG PARK COMMUNITY CONSULTATION RESULTS NOVEMBER 2017

1. Summary
The survey was successful in gathering the views and opinions from residents within Plains on the proposals for Stanrigg Park. The survey accessed a cross section of people within the community as discussed below through a range of access points.

2. Background
The survey was marketed by a range of methods listed in appendix 3 and hosted using www.surveymonkey.com. The survey opened in the middle of October 2017 and ran for five weeks. There was a relatively even split between online and paper based responses. In total there were 217 responses – this is remarkably high for a project of this size and demonstrates the high level of engagement of local people in the project and the success of the survey distribution network. The appendix at the back of the report lists all the additional verbatim comments provided.

3. Findings
3.1 Respondent Characteristics
In total there were 217 responses. In keeping with GDPR guidance on data gathering and usage, we did not consider it appropriate to ask for personal information such as gender, employment status, age etc. However, we were interested in the residence of respondents so we asked for post-code data. This was supplied by 204 people (96 all but 13 of the respondents). The map below shows the distribution of the respondent's postcodes in relation to the site. A total of 68 postcodes were recorded in the results, of these ML6 7UN, ML6 7NF, ML6 7UR, ML6 7JW, and ML6 7LU each had 8 or more respondents. This reflected the efforts made to focus on those residents living nearest to the site.

Central Scotland Green Network Trust
November 2017

Cadder Woods – plans for the next three years

So far so good...
Green Action Trust was asked by Glasgow City Council to develop plans to carry out the management of Cadder Woods in the early part of 2022. Since then, we have worked with local partners at Lambhill Stables and the Health Improvement Team to really understand how people feel about Cadder Woods and what needs to be improved. During our consultation over the summer, we collected over 150 responses and have now developed a three-stage plan for Cadder Woods that hopefully reflects those responses.

Phase 1: A big clean up (Spring 2023)
You told us you didn't like the rubbish, fly-tipping, dog mess and burnt-out cars.
You scored Cadder Woods as 5 out of 10. We want to make a difference quickly, get Cadder Woods as close to a ten as possible, so the priority is to get rid of most of the visible rubbish before next Spring.

Phase 2: Enjoying the Woods (2023-24)
You told us you enjoy walking round the woods, dog walks, exercising and the wildlife.
You want better paths, seating, improved entrances and play features. The school would like to have a place for outdoor learning. We have a lot of work to do to get the funding for this, but in about a year's time we expect to be starting on major works that will:

- Improve the paths across and through the site giving people better access to nature and places along the canal – a key link to the canal would be surfaced with tarmac and have solar lights
- Work with Cadder Primary School to create a teaching area
- Provide natural play features for children to enjoy or create live play
- Make the woodland more welcoming to people and a more social place to enjoy the outdoors
- Improve the entrances and waymark the path routes

Phase 3: Letting Nature Thrive (2024-25)
You told us you value Cadder Woods as a place to enjoy nature.
This phase of work will focus on biodiversity and the longer-term health of the woods.

- Some of that will mean cutting down trees that are getting unstable or removing some species that are prone to disease.
- There might seem to be a lot of change to begin with, but trees will be replaced with species that are better for wildlife and foraging for food.
- Open areas can have wildflowers sown to create habitat for pollinators like bees

Woodland management will also give the chance to clear paths in the woods for other popular features like a discrete bike trail. This would also be a time to work with local people on interpretation features and artwork.

Are we on the right track?

Community Woodlands Association Annual Conference 2023



Connecting People and Places in Urban
Greenspaces and Woodlands

Greenlink – 10 years of success



Community Woodlands Association Annual Conference 2023



Connecting People and Places in Urban Greenspaces and Woodlands

What to say in conclusion?

- Always feel free to contact Green Action Trust if you feel we can help you.
- Places can reveal some great stories and it is often worth understanding these and using them to create distinctiveness.
- People are our greatest resource and it is important to communicate with them, listen to (but not necessarily accept) concerns, and realise projects may be a means to an end as much as an end in themselves.

Community Woodlands Association Annual Conference 2023



Connecting People and Places in Urban
Greenspaces and Woodlands

Thank you for listening!

Mike Batley
Green Action Trust

Mike.batley@greenactiontrust.org