



Community
Woodlands
Association

CWA Communications

E-mail
Bulletin
Newsletter

CWA Members Google Group

Get in touch!

For general enquiries email us on: admin@communitywoods.org

For enquiries about a specific topic check out the Staff page on our website to see who is the most relevant contact: www.communitywoods.org/our-staff

Bulletin

Sent out on or around the 20th of every month, the monthly bulletin features the latest:

- news
- events
- training
- jobs
- funding opportunities

If you want anything included in an edition, please send to admin@communitywoods.org, by the 15th of the month.

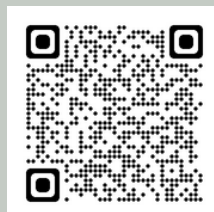
Newsletter

The quarterly newsletter (sent out on or around the 1st of March, June, September, and December) is the place for members to share their woodland stories – these could be celebrations/ challenges/ developments, or whatever you think might be helpful to share with other members.

If you want to send an article for inclusion in the next newsletter, please email:

admin@communitywoods.org, by the 15th of the month preceding the publication month.

Members are automatically added to the Bulletin and Newsletter mailing list, but anyone can join: www.communitywoods.org/newsletters-and-bulletins



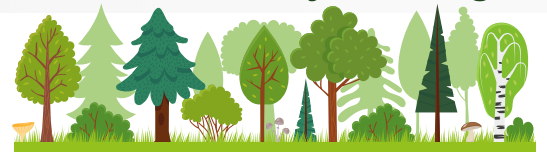
CWA Members Google Group

The Google Group is a way for members (and CWA) to make direct contact by email to ask questions and share information. Any email sent to the group is first moderated by CWA staff, before being forwarded to the rest of the group.

To access the group successfully, any email address registered for the group must be associated with a google account.

If you would like to add email address/es to the Google Group please email:

admin@communitywoods.org



Share the news

To help ensure better sharing of information, CWA group members are encouraged to register more than one contact email for the Bulletins and Newsletters, and the Google Group.

If you have a woodland bulletin board you might also want to pin up the bulletin and newsletter to share with others.